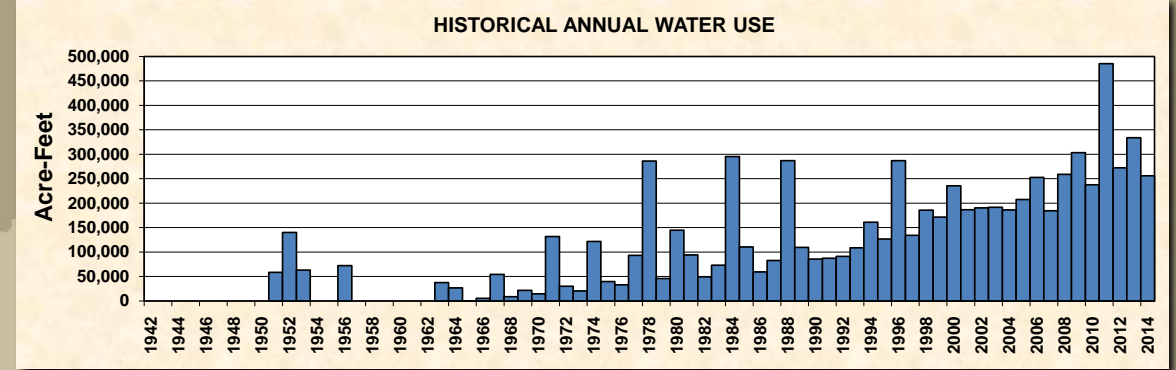
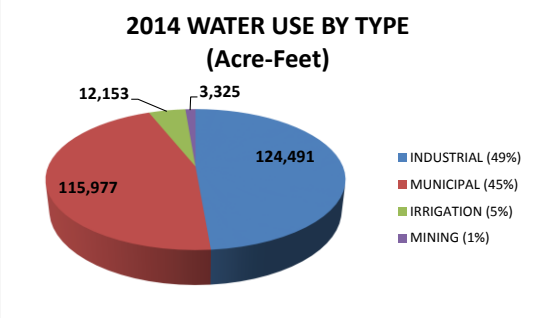
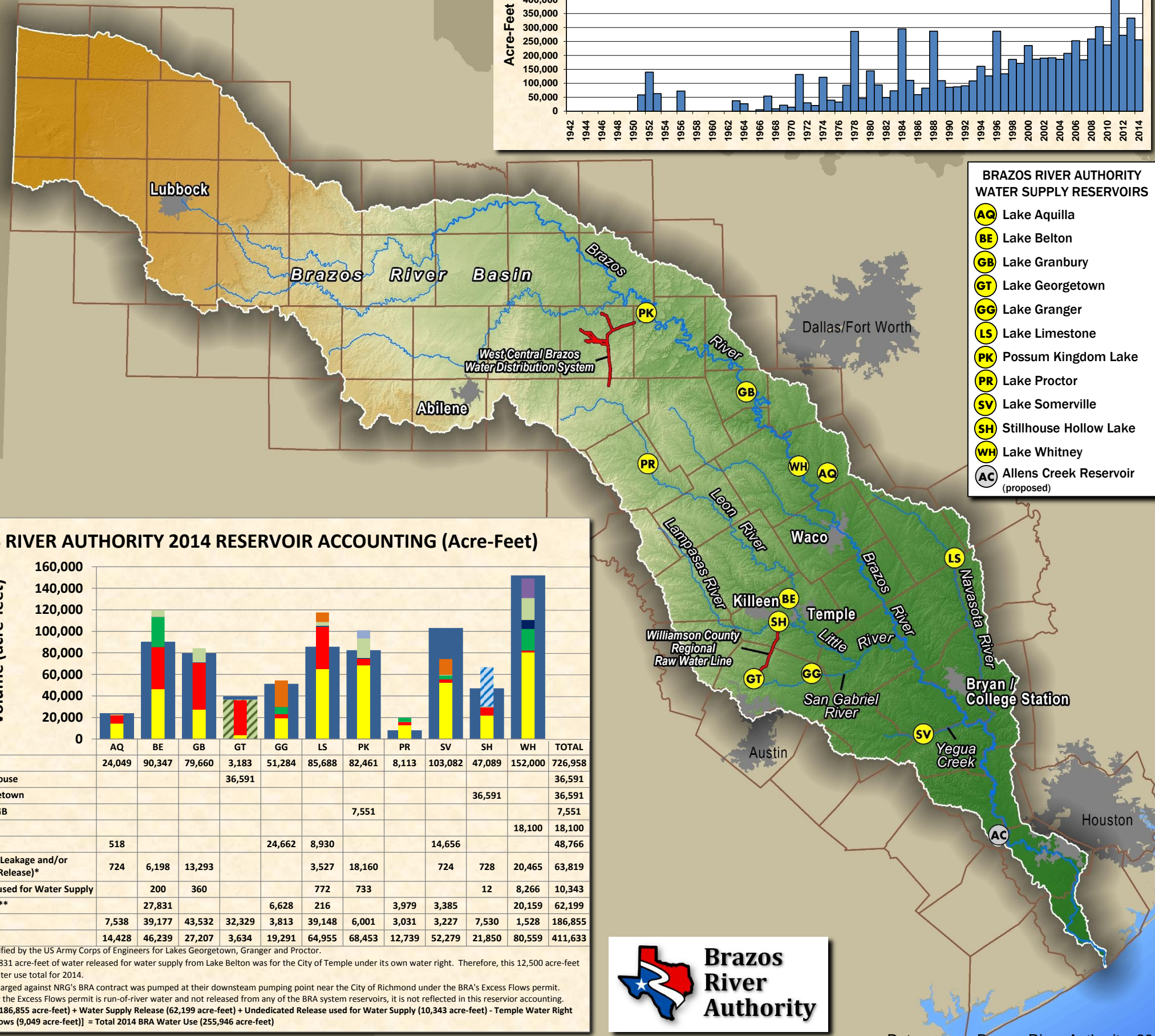


Brazos River Authority 2014 Customer Water Use and Reservoir Accounting Summary

2014 TOTAL WATER USE
255,946 Acre-Feet

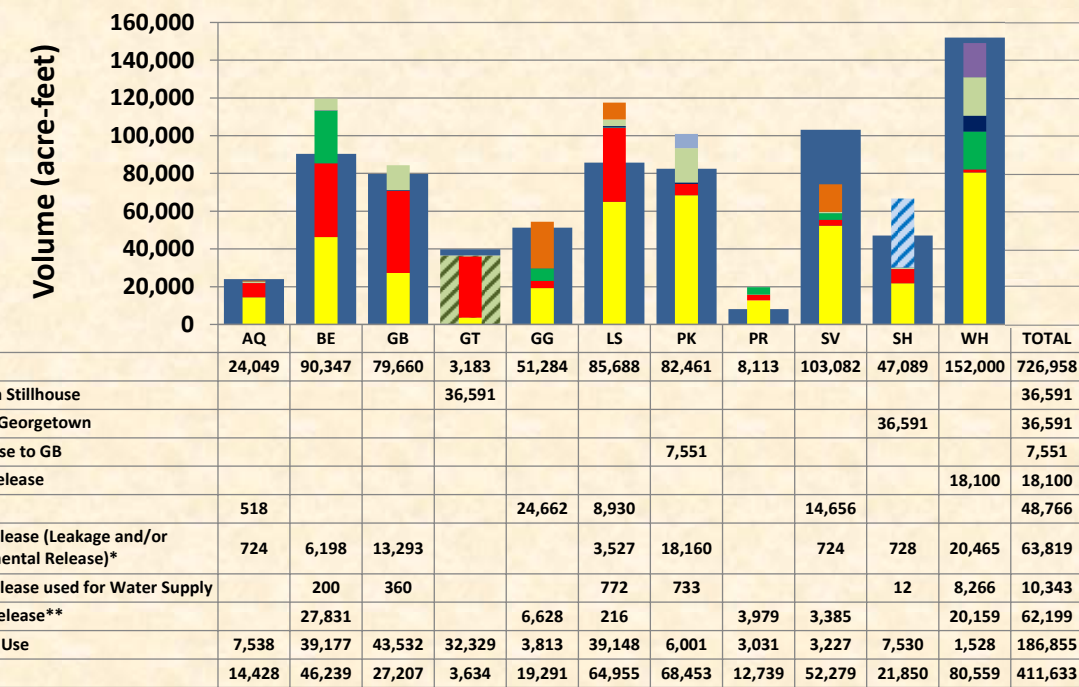


2014 WATER USE BY INTERRUPTIBLE AND LAKESIDE LOCAL WATER CUSTOMERS	VOLUME (ACRE-FEET)
POSSUM KINGDOM LAKE	
BR AT POSSUM KINGDOM, LTD	14
DAVID ANDREWS	0.2
JAMES MARQUIS	0.5
LAKESIDE LOCAL USE	247
VERITAS ENERGY, LLC	0.2
WEST CENTRAL BRAZOS PIPELINE	2266
SUBTOTAL:	2,528
BRAZOS RIVER BELOW POSSUM KINGDOM LAKE	
BRIGADIER OPERATING CO, LLC	7
FORTUNE BEND RIVER RANCH	0.2
VERITAS ENERGY, LLC	6
WACO BEND RANCH, LTD	4
J&J LAND & LIVESTOCK CO	6
SUBTOTAL:	23
LAKE GRANBURY	
LAKESIDE LOCAL USE	327
BRAZOS RIVER BELOW LAKE GRANBURY	
INGRAM CONCRETE LLC	86
LATTIMORE MATERIALS	206
LOWELL UNDERWOOD	7
SUBTOTAL:	299
LAKE WHITNEY	
DOUBLE DIAMOND PROPERTIES, INC	427
LAKESIDE LOCAL USE	13
SUBTOTAL:	440
BRAZOS RIVER BELOW LAKE WHITNEY	
CHARLES R. MATTHEWS	10
JAMES K. BOYD	6
STEVE BAUGH	0.04
W. T. HELBERT FAMILY TRUST	255
BIG CREEK CONSTRUCTION	0.2
CLIFF SKILES	495
HORIZON TURF GRASS, INC	505
3-D FARMS	148
BRAZOS FARMS LTD, INC	46
ANADARKO PETROLEUM CORPORATION	32
KNIFE RIVER CORPORATION	105
JAMES CONSTRUCTION GROUP, LLC	1
CREEKSIDE NURSERY, LLC	76
VULCAN CONST. MATERIALS, LP	500
DOW PIPELINE COMPANY	617
HPCP INVESTMENTS LLC	155
SUBTOTAL:	2,951
LAKE PROCTOR	
LAKESIDE LOCAL USE	0.4
SEARS BROTHERS	11
SUBTOTAL:	12
LAKE BELTON	
LAKESIDE LOCAL USE	22
LEON RIVER BELOW LAKE BELTON	
CRAIG WHEELER	4
STRASBURGER ENTERPRISE	39
SUBTOTAL:	42
LAKE STILLHOUSE HOLLOW	
LAKESIDE LOCAL USE	1
LAMPASAS RIVER BELOW LAKE STILLHOUSE HOLLOW	
APEC-TEXAS, INC	1
THOMAS LOVELACE	9
SUBTOTAL:	10
LAKE LIMESTONE	
LAKESIDE LOCAL USE	95
TOTAL	6,749



- BRAZOS RIVER AUTHORITY WATER SUPPLY RESERVOIRS**
- AQ** Lake Aquilla
 - BE** Lake Belton
 - GB** Lake Granbury
 - GT** Lake Georgetown
 - GG** Lake Granger
 - LS** Lake Limestone
 - PK** Possum Kingdom Lake
 - PR** Lake Proctor
 - SV** Lake Somerville
 - SH** Stillhouse Hollow Lake
 - WH** Lake Whitney
 - AC** Allens Creek Reservoir (proposed)

BRAZOS RIVER AUTHORITY 2014 RESERVOIR ACCOUNTING (Acre-Feet)



*Leakage has not been quantified by the US Army Corps of Engineers for Lakes Georgetown, Granger and Proctor.
 **12,500 acre-feet of the 27,831 acre-feet of water released for water supply from Lake Belton was for the City of Temple under its own water right. Therefore, this 12,500 acre-feet is not reflected in BRA's water use total for 2014.
 ***9,049 acre-feet of water charged against NRG's BRA contract was pumped at their downstream pumping point near the City of Richmond under the BRA's Excess Flows permit. Since water pumped under the Excess Flows permit is run-of-river water and not released from any of the BRA system reservoirs, it is not reflected in this reservoir accounting.
NOTE: [Lakeside Water use (186,855 acre-feet) + Water Supply Release (62,199 acre-feet) + Undedicated Release used for Water Supply (10,343 acre-feet) - Temple Water Right (12,500 acre-feet) + Excess Flows (9,049 acre-feet)] = Total 2014 BRA Water Use (255,946 acre-feet)

2014 WATER USE BY FIRM WATER CUSTOMERS	VOLUME (ACRE-FEET)
POSSUM KINGDOM LAKE	
DOUBLE DIAMOND PROPERTIES, INC	525
POSSUM KINGDOM WSC	1,292
SPORTSMAN'S WORLD MUD	133
TEXAS PARKS & WILDLIFE DEPT	1,119
WEST CENTRAL BRAZOS PIPELINE	404
SUBTOTAL:	3,473
BRAZOS RIVER BELOW POSSUM KINGDOM LAKE	
CARR-THOMAS RANCH	3
PALO PINTO CO. MWD NO. 1	513
SUGAR TREE, INC	105
PARKER COUNTY SUD	89
SUBTOTAL:	710
LAKE GRANBURY	
ACTON MUNICIPAL UTILITY DISTRICT	11
BRAZOS REGIONAL PUBLIC UTILITY AGENCY	4,169
COUNTY OF SOMERVELL	234
DECORDOVA BEND ESTATES OWNERS	68
GRANBURY RECREATIONAL ASSOC	27
GRANBURY, CITY OF	273
KING RANCH TURFGRASS, LP	118
LENMO INC	2,736
LSF DEVELOPMENT CORP	46
MONARCH UTILITIES I, LP	468
PECAN PLANTATION OWNER'S ASSOC	238
TXU - LUMINANT ELECTRIC COMPANY	33,927
WOLF HOLLOW SERVICES, LLC	891
SUBTOTAL:	43,205
BRAZOS RIVER BELOW LAKE GRANBURY	
EOG RESOURCES INC. WESTERN DIV	61
LAKE WHITNEY	
WHITE BLUFF PROPERTY OWNERS ASSOC	1,088
BRAZOS RIVER BELOW LAKE WHITNEY	
CALPINE BOSQUE ENERGY CENTER LLC	3,506
LORENA, CITY OF	118
MARLIN, CITY OF	597
SELECT ENERGY SERVICES LLC	815
NRG TEXAS, LLC	32,058
GULF COAST WATER AUTHORITY	11,208
VULCAN CONST. MATERIALS, LP	897
SUBTOTAL:	49,198
LAKE AQUILLA	
AQUILLA WATER SUPPLY DISTRICT	2443
CLEBURNE, CITY OF	5095
SUBTOTAL:	7,538
LAKE PROCTOR	
LAKE PROCTOR IRRIGATION AUTHORITY	304
UPPER LEON RIVER MUNICIPAL	2,716
SUBTOTAL:	3,020
LEON RIVER BELOW LAKE PROCTOR	
LAKE PROCTOR IRRIGATION AUTHORITY	771
NORTH LEON RIVER IRRIGATION	3,208
SUBTOTAL:	3,979
LAKE BELTON	
439 WATER SUPPLY CORP	209
BELL CO. WATER CONTROL & IMPROVEMENT	30,807
BLUEBONNET WATER SUPPLY CORP	2,660
GATESVILLE, CITY OF	5,479
SUBTOTAL:	39,155
LEON RIVER BELOW LAKE BELTON	
TEMPLE, CITY OF	8,636
WILDFLOWER COUNTRY CLUB, INC	158
SUBTOTAL:	8,794
LAKE STILLHOUSE HOLLOW	
CENTRAL TEXAS WATER SUPPLY CORP	3,883
KEMPNER WATER SUPPLY CORP	2,267
LAMPASAS, CITY OF	1,379
SUBTOTAL:	7,529
LAMPASAS RIVER BELOW LAKE STILLHOUSE HOLLOW	
COUNTRY HARVEST	2
LAKE GEORGETOWN	
GEORGETOWN, CITY OF	8,220
ROUND ROCK, CITY OF	18,045
BRUSHY CREEK MUD	2,757
CHISHOLM TRAIL SUD	3,308
SUBTOTAL:	32,329
LAKE GRANGER	
EAST WILLIAMSON CO WATER	3,813
LITTLE RIVER BELOW SAN GABRIEL-LITTLE CONFLUENCE	
ALCOA, INC.-ROCKDALE OPERATION	2,249
LAKE LIMESTONE	
NRG TEXAS, LLC	20,088
SLC WATER SUPPLY	80
TXU - LUMINANT ELECTRIC COMPANY	18,886
SUBTOTAL:	39,054
NAVASOTA RIVER BELOW LAKE LIMESTONE	
SELECT ENERGY SERVICES LLC	244
WELLBORN SPECIAL UTILITY DISTRICT	528
SUBTOTAL:	772
LAKE SOMERVILLE	
BRENHAM, CITY OF	3,227
TOTAL	249,197

